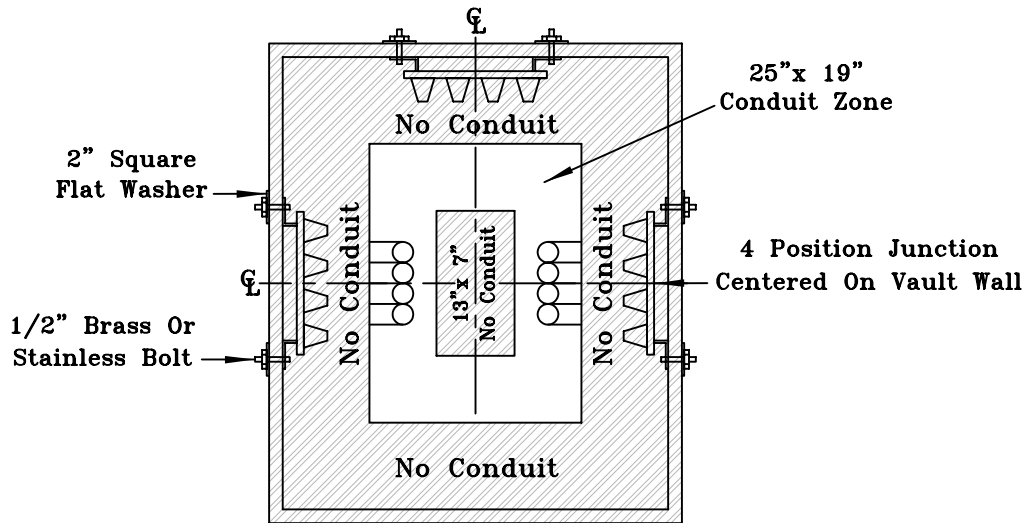


SECTION VIEW



Front
(Faces Road)
VIEW A

APPROVED 4-POINT JUNCTIONS			
MANUFACTURER	200A	600A	600A/200A
ELASTIMOLD	164J4	--	J4-6622-15-00-4
COOPER	LJ215C4	DJ625A4B	--
CHARDON	--	--	9467A6622H
PATON & COOK	--	--	JB125C2W2B

Notes:

1. Conduits to turn up neatly towards center of the vault. Never under the lip.
2. Interior gravel level must cover holes on sides of vault.
3. There must be 6" of gravel below vault.
4. Vault shall protrude 2" to 4" above undisturbed grade
5. Vault must be installed level in the hole.
6. Conduits shall be marked to indicate phasing with red (AØ), white (BØ), or blue (CØ). Spare is not marked.
7. Refer to CORED Standard 514 for grounding specifications.
8. Refer to CORED Standard 515A for vault manufacturers.

4 POSITION MUTIPOINT JUNCTION MOUNTING WITHIN VAULTS

REV	DATE	DRWN	APPD	DESCRIPTION	SUPERSEDES: 605.S01.R02	SCALE: NTS	
3	9-29-10	PWS	MEB	TITLE CHANGE	DRWN: MESA	APPD: MEB	DATE: 3-1-07
2	1-01-10	PWS	MEB	HANDBOOK UPDATE.	CORED STANDARD NUMBER		516 R 3