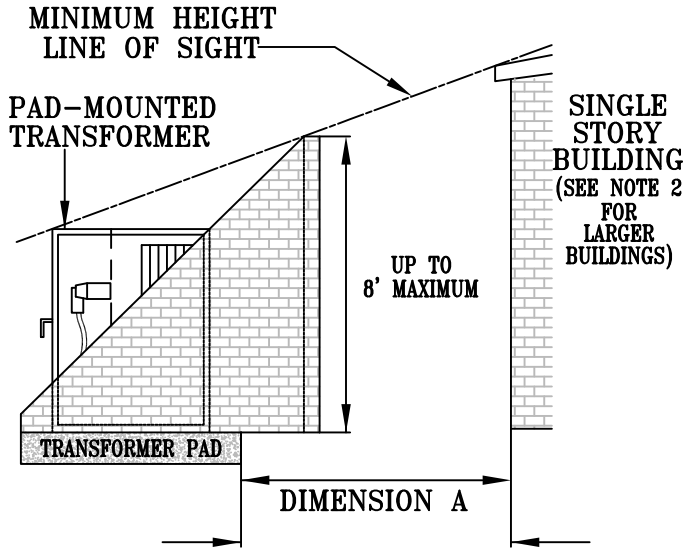


ELEVATION VIEW



SHIELD REQUIRED IF TRANSFORMER IS CLOSER THAN INDICATED IN TABLE 1.

PLAN VIEW

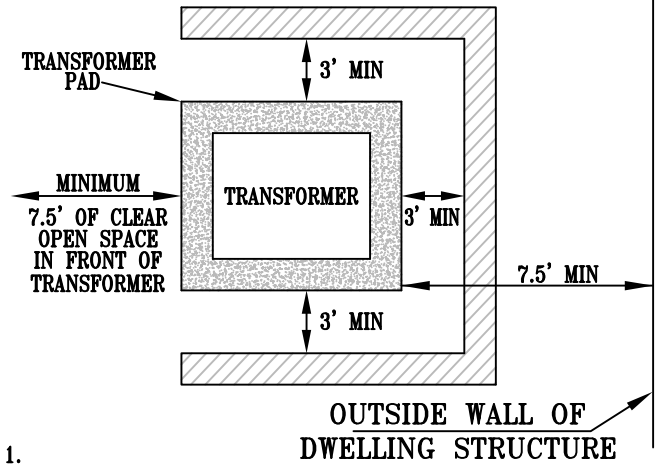


TABLE 1

| Transformer kVA | Dimension A |
|---------------------|-------------|
| 0-75..... | ≥10' |
| 76-333..... | ≥20' |
| 334 AND LARGER..... | ≥25' |

Notes:

1. The back and side edge of the transformer pad cannot be closer than 3 feet to the shielding wall. If metering or service disconnect switches are located on the inside back or side wall, increase this distance to 6 feet.
2. The minimum height of the shielding wall must be such that if you look at the highest corner of the transformer and align it with the highest corner of the shielding wall, you cannot see the home or dwelling structure (see Elevation View). For larger buildings, only a maximum height of 8 feet is required.
3. The shielding wall must be built of non-flammable material. Block or brick is the recommended material. If any other material is substituted, please contact CORED for approval.
4. A developer may use shielding material that is suited to the theme of their development as long as the material is non-flammable and can contain the explosion from a transformer.
5. CORED will make temporary repairs to damaged transformer shielding walls with materials CORED has on hand to mitigate safety issues. This material will not match the theme of the development. The owners are responsible for permanent repairs to walls.
6. The developer shall be responsible for building the shielding structure.
7. At no time will the transformer pad (closest to the structure being protected) be allowed to get closer than 7.5 feet from the home or dwelling structure.
8. Any building where people may enter, may be considered as a home or dwelling structure.
9. There can be no obstruction or wall closer than 7.5 feet to the front of the transformer's pad.
10. Driveways must have a minimum of 2 feet of clearance from the transformer pads, stand alone vaults, and secondary pedestals.
11. In cases where the transformer sits on top of a vault, the language for the transformer pad is to be applied to the vault.
12. A minimum of 5 feet of clearance is required from dwellings structures to stand alone vaults, switching equipment, and secondary pedestals.
13. Switchgear, as defined by the National Electric Safety Code, must have a minimum clearance of 10 feet from driveways, or parking areas.

SITING PAD MOUNTED TRANSFORMERS WITH WALLS

| REV | DATE | DRWN | APPD | DESCRIPTION | SUPERSEDES: 510.S01.R01 | SCALE: NTS |
|-----|---------|------|------|---------------------------|-------------------------------|------------|
| 1 | 1-1-10 | PWS | MEB | HANDBOOK UPDATE. | DRWN: MESA | APPD: MEB |
| 2 | 12-3-20 | PWS | MAE | ADDED TO CLEARANCE NOTES. | CORED STANDARD NUMBER 330 R 2 | |