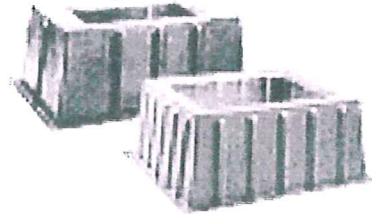


HOME
CONTACT US



Fiberglass Switchgear Pad-Vaults

These pad-vaults are designed to accommodate switchgear of leading manufacturers. They are manufactured from durable, non-corrosive, thermoset polyester resin reinforced with fiberglass. Low inorganic filler content (21% by weight) assures durability with minimum structural degradation over time.

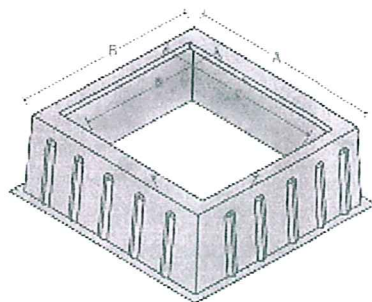


- Single Phase Transformer Box Pads
- Three Phase Transformer Box Pads
- Splice Boxes / Secondary Pedestals
- Switchgear Pads / Vaults
- Cabinet Bases - Foundations

- Lightweight, easily installed and leveled
- Easily drilled for switchgear lag bolts or mounting brackets
- Shaped for easy stacking, storage and shipment
- Provides ample space under the switchgear for training large cables
- Turf green color is pigmented throughout the composite
- Top flange and sides are multi-ribbed for high load bearing capacity

Key dimensions for the Switchgear Pad-Vaults are shown below.

For additional information and complete specifications, please [contact us](#).



Contact us for a copy of the "S&C Cross Reference Guides"

BOX PAD CAT. NO.	TOP SURFACE		TOP OPENING		HT. K
	A	B	C	D	
BPS-7240A-15	72	40	See Drawing below		
BPS-7240B-15	72	40	See Drawing below		
SG-6270	62	70	51	59	32
SG-6270-20	62	70	51	59	20
SG-7240	72	40	52	28	32
SG-7245	72	45	60	33	30
SG-7378	73.5	78	59.5	68	32
SG-7378A-20	73.5	78	55.5	60	20
SG-8085	80	85	70	75	32
SG-8587-20-OIL	85.5	87.5	62.75	64.75	20
SG-8646	86	46	72	17	32
SG-8770	87	70	76	59	32
SG-8590	85	90	75	76	32

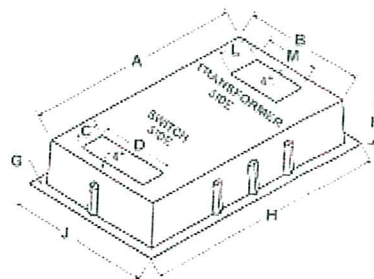
COVERS: Suffix with "C" - Example: SG-6270-C

Contact us for a copy of the "S&C Cross Reference Guides"

The BPS-7240A-15 and BPS-7240B-15 are combination box pads designed for a transfer type switch/meter mounted on one end and a single phase padmounted transformer on the other end.

Applications include:

- Backup source with critical applications
- Offset energy cost at peak loading intervals
- Allows private power generators (wind, internal combustion, solar, etc.) to switch and meter power with local power company



Note: Dimensions are measured at the intersection of projected adjacent planes.

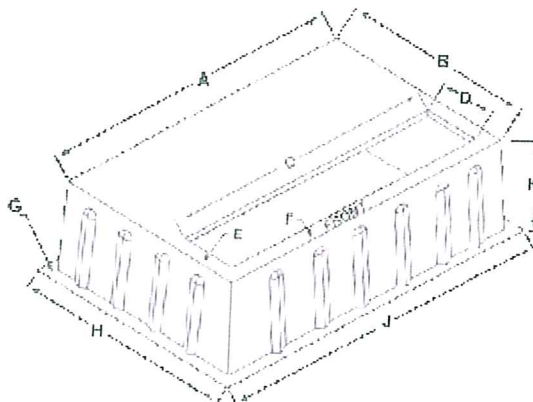
DIMENSIONS (inches)											
BOX PAD CAT. NO.	TOP SURFACE		TOP OPENING				TOP OPENING				UNITS/PALLET
	A	B	C	D	G	H	J	K	L	M	
BPS-7240A-15	72	40	8	24	3.5	81	49	15	10	18	10
BPS-7240B-15	72	40	14	24	3.5	81	49	15	6	18	10

COVERS: Suffix with "C" - Example: BPS-7240A-15-C

Contact us for a copy of the "S&C Cross Reference Guides"

Pad-Vaults for Vista Switchgear

Note: Dimensions are measured at the intersection of projected adjacent planes.



DIMENSIONS (inches)											
BOX PAD CAT. NO.	TOP SURFACE		TOP OPENING								UNITS/PALLET
	A	B	C	D	E	F	G	H	J	K	
SG-7245A	72	45	33	18	6	6	4	57	84	30	10
SG-7467	74	67	64	18	5	5	4	83	90	32	10
SG-10467	104	67	94	18	5	5	4	83	120	32	10
SG-10473	104	73	94	18	5	5	4	89	120	32	10

Contact us for a copy of the "S&C Cross Reference Guides"

To top